



Belize Aggressor IV™

SAFETY PROTOCOLS

Battery Charging

- No charging of personal electronics in staterooms when unoccupied
- Staff will unplug any devices they find plugged in when servicing your stateroom
- Only charge camera equipment at designated charging stations and not in your stateroom
- Only charge Lithium-ion batteries at outside charging stations and not inside the yacht
- All charging stations will be unplugged when guests go to bed

Stateroom Orientations

- A staff member will show you to your stateroom and provide an orientation including:
 - Pointing out smoke detectors
 - Showing the main escape route and explain how to reach the Muster Station
 - Showing the secondary escape route including water-tight doors or escape hatches
 - Showing where the two nearest fire extinguishers are and instructions on how to use them
 - When the Welcome Briefing will be held
- The safety systems presented will be reviewed again in the Welcome Briefing.

Life Jackets

- Are located at Sundeck Muster Station
- If alarm sounds – Do NOT return to your stateroom.

Smoke Detectors

All devices are serviced every six months

- Test power source
- Replace batteries (for battery operated units)
- Test smoke sensors using canned smoke or smoke matches

Smoking

- Is only allowed in designated area
- Smoking Area: rear of the sundeck

Night Safety Watch

- Night Safety Watch is a staff member or on-duty night watchman awake and performing duties while others sleep from 10 PM to 6 AM
 - If yacht is traveling at night, then several staff members are up driving and walking around to check systems throughout the yacht.
- Night Safety Watch Duties Include:
 - Conducting regular rounds throughout the yacht
 - Monitoring yacht systems and anchorage
 - Ensuring all charging stations are unplugged
 - Ensuring all emergency exits are accessible

*** Safety Comes First ***

If something feels wrong,

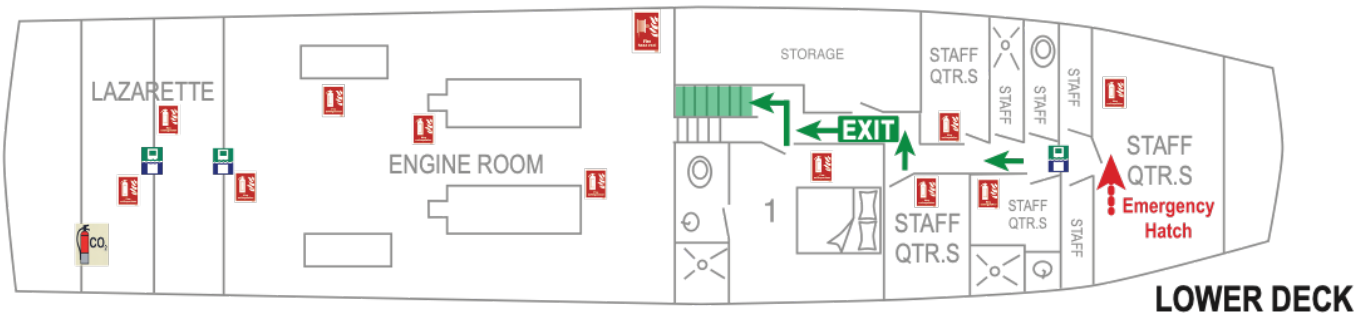
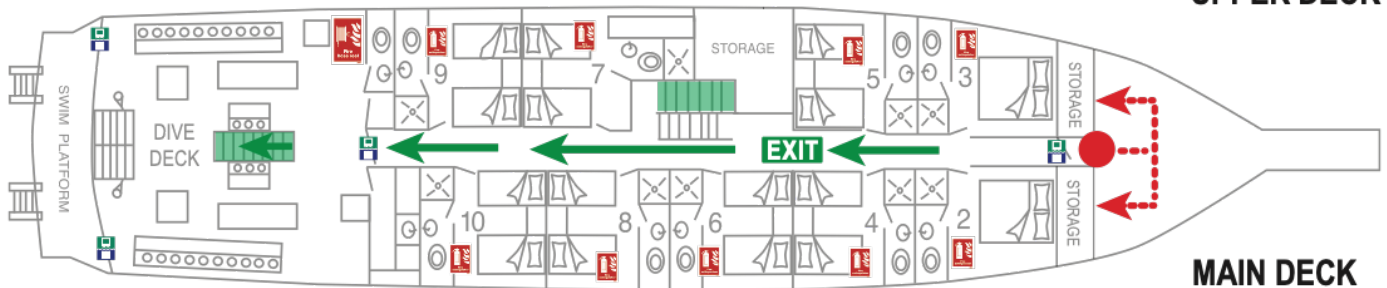
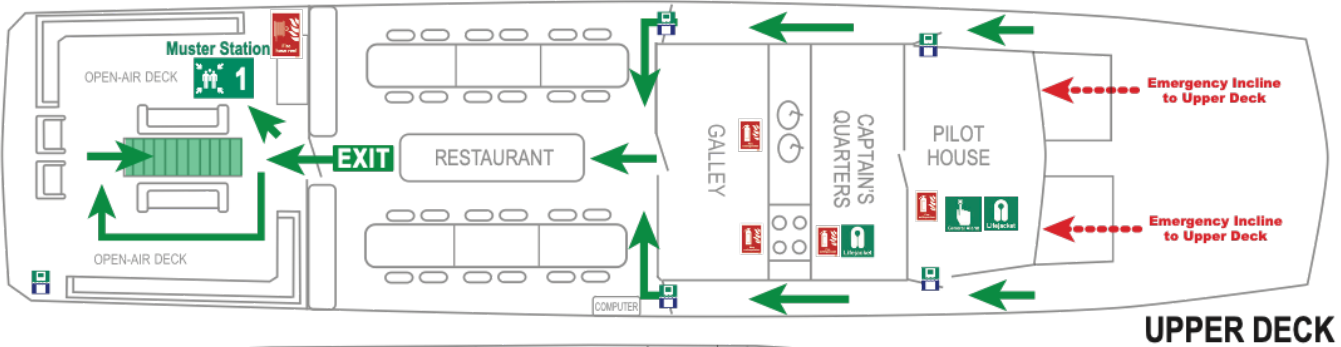
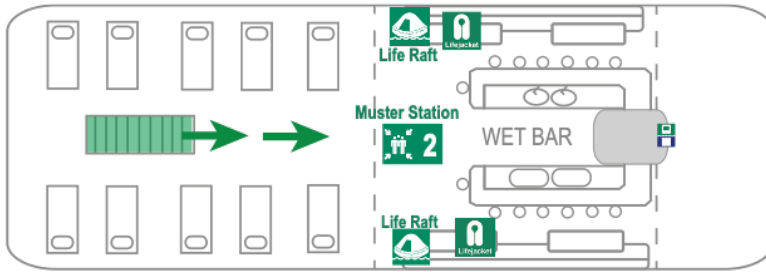
Don't Wait!

Tell one of the staff immediately.



EVACUATION PLAN

Belize Aggressor IV®



GENERAL ALARM SIGNAL:

In the event of an emergency, the following signal will be sounded on the ship's horn: Seven short blasts followed by one long blast.



Muster Station



General Alarm



Fire Extinguisher



Life Raft



Fire Hose



Life Jacket



Watertight Door



Primary Exit



Secondary Exit



You Are Here



Emergency Hatch

Actions To Take Upon Hearing The General Alarm Signal:

- Proceed directly to Muster Station #1
- Assist those who need help
- Follow the instructions of staff members
- DO NOT return to your cabin to collect your property
- If Primary Exit is blocked, use the Secondary Exit as marked in the plan.



SAFETY SUMMARY


Standard Operating Procedures

Safety is our top priority. All Aggressor destinations operate according to their brand's Standard Operating Procedures (SOP) manual. These standards ensure a consistent experience for our guests and written instructions for training of staff, regardless of their location. The SOP also specifies the safety equipment required for the destination and emergency drills. Drills are conducted regularly for staff training. For some drills, we may invite you to participate with us!

Belize Aggressor IV Safety Summary:

(\$\$ = available for additional fee)

DIVING		Notes
Dive Safety Briefing (General)	✓	Conducted before 1 st dive
Diver Locator Systems	✓	Nautilus
High Pressure Compressor for Diving Air	✓	Two compressors
Nitrox System Available	✓	\$\$ Membrane System
Tanks – Visual & Hydro Inspection	✓	\$\$ for 100 cu/ft (15L) Per regulations
EMERGENCY		Notes
Emergency Alarm System	✓	General Alarm, Bell & Horn
Fire Drills	✓	
Life Jackets	✓	Muster Station
Life Rafts	✓	Two – self deploying w/ hydrostatic releases
FIRE SAFETY		Notes
Public area fire extinguishers	✓	
Public area smoke detectors	✓	
MEDICAL		Notes
AED / Defibrillator	✓	
First Aid Kit	✓	
Emergency Oxygen Kits	✓	1 Portable + 350 cu/ft Storage
ROOMS		Notes
Emergency Exits (Lower Deck)	✓	Forward & Aft
Fire Extinguishers	✓	Small unit in each room
Smoke Detectors In Room	✓	Independent units

GENERAL		Notes
CCTV System	✓	Views of engine room, salon, swim platform, hallway
Environmental Care / Sustainability	✓	See 
Marked Emergency Exits	✓	
Mobile Phone (cellular)	✓	When in range of shoreline
Night Watch	✓	10 PM to 6 AM
Satellite Phone	✓	
Smoking Permitted	✓	In designated areas only
Welcome & Safety Briefing	✓	1 st Night
Wi-Fi / Internet / Email	✓	Partial – See cellular
STAFF		Notes
Social Responsibility / Care	✓	(Some Staff) STCW Training
First Aid Training	✓	
Firefighting Training	✓	(Some Staff) STCW Training
YACHT		Notes
Dry Dock Refurb. Program	✓	Every 24 months
Engines	✓	Two main drive engines
Single Side Band Radio	✓	
VHF Radio	✓	Mounted & Handheld
Generators	✓	Two