

SAFETY PROTOCOLS

Battery Charging

- No charging of personal electronics in staterooms when unoccupied
- Staff will unplug any devices they find plugged in when servicing your stateroom
- Only charge camera equipment at designated charging stations and not in your stateroom
- Only charge Lithium-ion batteries at outside charging stations and not inside the yacht
- All charging stations will be unplugged when guests go to bed

Stateroom Orientations

- A staff member will show you to your stateroom and provide an orientation including:
 - Pointing out smoke detectors
 - Showing the main escape route and explain how to reach the Muster Station
 - Showing the secondary escape route including water-tight doors or escape hatches
 - Showing where the two nearest fire extinguishers are and instructions on how to use them
 - When the Welcome Briefing will be held
- The safety systems presented will be reviewed again in the Welcome Briefing.

Life Jackets

- Are located at Muster Station #1
- If alarm sounds – Do NOT return to your stateroom.

Smoke Detectors

All devices are serviced every six months

- Test power source
- Replace batteries (for battery operated units)
- Test smoke sensors using canned smoke or smoke matches

Smoking

- Is only allowed in designated area
- Smoking Area: at rear of the lower deck and on top deck

Night Safety Watch

- Night Safety Watch is a staff member or on-duty night watchman awake and performing duties while others sleep from 10 PM to 6 AM
 - If yacht is traveling at night, then several staff members are up driving and walking around to check systems throughout the yacht.
- Night Safety Watch Duties Include:
 - Conducting regular rounds throughout the yacht
 - Monitoring yacht systems and anchorage
 - Ensuring all charging stations are unplugged
 - Ensuring all emergency exits are accessible

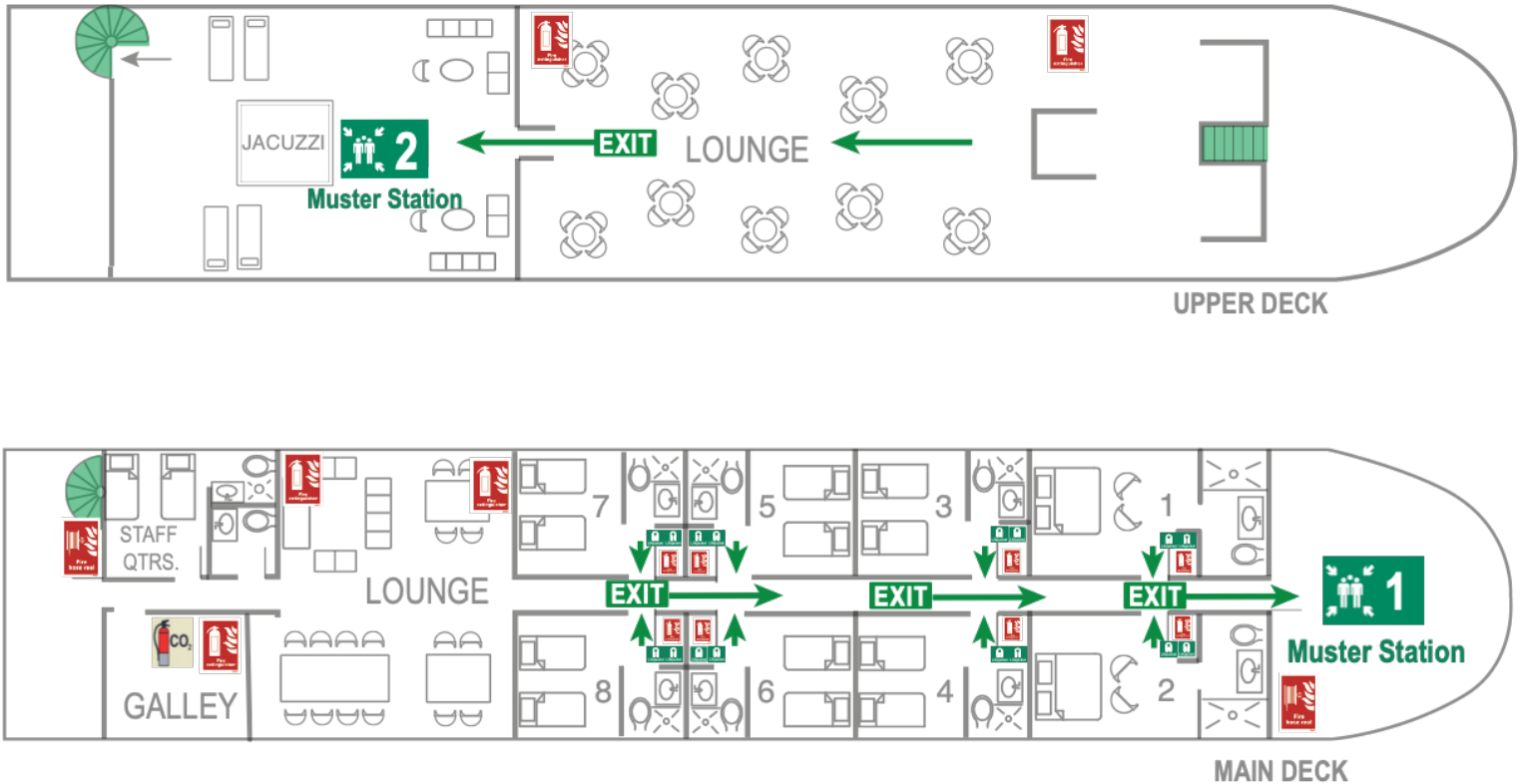
Safety Comes First

If something feels wrong,

Don't Wait!

Tell one of the staff immediately.

EVACUATION PLAN



Nile Queen®, Aggressor River Cruises®

GENERAL ALARM SIGNAL:

In the event of an emergency, the following signal will be sounded on the ship's horn: Seven long blasts followed by one short blast.

Actions To Take Upon Hearing The General Alarm Signal:

- Proceed directly to Muster Station #1
- Assist those who need help
- Follow the instructions of staff members
- DO NOT return to your stateroom to collect your property



Muster Station



Fire Extinguisher



Life Jackets



CO2 Fire Extinguisher



Fire Hose

 **Primary Exit**

 **You Are Here**

SAFETY SUMMARY

Standard Operating Procedures

Safety is our top priority. All Aggressor destinations operate according to their brand's Standard Operating Procedures (SOP) manual. These standards ensure a consistent experience for our guests and written instructions for training of staff, regardless of their location. The SOP also specifies the safety equipment required for the destination and emergency drills. Drills are conducted regularly for staff training. For some drills, we may invite you to participate with us!

Aggressor Nile Queen Safety Summary:


| General Information | | Notes |
|---------------------|---|-------|
| Adventure Briefing | ✓ | |
| Safety Briefing | ✓ | |
| Egyptology Briefing | ✓ | |

| EMERGENCY | | Notes |
|------------------------|---|----------------------|
| Emergency Alarm System | ✓ | Ship's Bell |
| Fire Drills | ✓ | |
| Life Jackets | ✓ | One per guest |
| Life Rafts | ✓ | Tug acts as Lifeboat |

| FIRE SAFETY | | Notes |
|--------------------------------|---|-------|
| Public area fire extinguishers | ✓ | |
| Public area smoke detectors | ✓ | |

| MEDICAL | | Notes |
|---------------------|---|-------|
| AED / Defibrillator | ✓ | |
| First Aid Kit | ✓ | |

| ROOMS | | Notes |
|-------------------------|---|-------------------|
| Emergency Exits | ✓ | Forward & Aft |
| Fire Extinguishers | ✓ | Small units |
| Smoke Detectors In Room | ✓ | Independent units |

| GENERAL | | Notes |
|-------------------------------------|---|---|
| CCTV System | | |
| Environmental Care / Sustainability | ✓ | See  |
| Marked Emergency Exits | ✓ | |
| Mobile Phone (cellular) | ✓ | Signal throughout charter |
| Night Watch | ✓ | 10 PM to 6 AM |
| Satellite Phone | | |
| Smoking Permitted | ✓ | In designated areas only |
| Welcome & Safety Briefing | ✓ | 1 st Night |
| Wi-Fi / Internet / Email | ✓ | Mostly – See cellular |

| STAFF | | Notes |
|------------------------------|---|-------|
| Social Responsibility / Care | ✓ | |
| First Aid Training | ✓ | |
| Firefighting Training | ✓ | |

| YACHT | | Notes |
|--------------------------|---|-----------------------|
| Dry Dock Refurb. Program | ✓ | Every 12 months |
| Engines | | Tug used for mobility |
| Generators | ✓ | Two |